

# AIRPARK 599

STOCKTON, CALIFORNIA



## BUILDING 6 | 203,840 SF

**Coming Soon!**

- Class A Distribution/Fulfillment Center
- Flexible Site/Expandable Trailer Parking
- Centralized Market Location

A Quality Development By:



**BLAKE RASMUSSEN**  
Executive Managing Director  
+1 209 481 7044  
blake.rasmussen@cushwake.com  
Lic # 01010250

**KEVIN DAL PORTO**  
Executive Managing Director  
+1 209 601 2476  
kevin.dalporto@cushwake.com  
Lic # 01212935

**TYSON VALLENARI, SIOR**  
Executive Managing Director  
+1 510 919 2328  
tyson.vallenari@cushwake.com  
Lic # 01480887



[cushmanwakefield.com](http://cushmanwakefield.com)



## CONSTRUCTION + SITE HIGHLIGHTS

- › Modern infrastructure with new roadways + signalized intersections
- › Centralized location connecting to area freeways, intermodal facilities + ports throughout the Central Valley and Bay Area
- › Premium, Class A warehouse facility with modern office/amenities
- › Suitable for eCommerce, advanced manufacturing, and/or distribution uses
- › Generous truck courts sizes with ample + expandable trailer parking stalls
- › Flexible site and/or building configurations to meet a variety of occupier needs (contact broker for details)

## PROPERTY INFORMATION

GROSS PARCEL SIZE	12.00 AC
BUILDING SF	203,840 SF
WATER/SEWER	CITY OF STOCKTON
ELECTRICAL	PG&E
TELCOM	AT&T

**BLAKE RASMUSSEN**  
Executive Managing Director  
+1 209 481 7044  
blake.rasmussen@cushwake.com  
Lic # 01010250

**KEVIN DAL PORTO**  
Executive Managing Director  
+1 209 601 2476  
kevin.dalporto@cushwake.com  
Lic # 01212935

**TYSON VALLENARI, SIOR**  
Executive Managing Director  
+1 510 919 2328  
tyson.vallenari@cushwake.com  
Lic # 01480887



cushmanwakefield.com

## PROPERTY SUMMARY

Airpark 599 is a fully entitled, master-planned logistics park on 272 acres next to the Stockton Metropolitan Airport + Highway 99 in Stockton, California. As a hub for all major markets in Northern California, Airpark 599 will add 3 million square feet of Class A space—suitable for e-commerce fulfillment, distribution, or advanced manufacturing—while improving area infrastructure and bringing new jobs to a large, skilled workforce.

Airpark 599's centralized location offers ideal transportation needs with the ability to connect to area highways + interstates (Hwy 99, I-5, I-205), nearby rail intermodal facilities (BNSF, Union Pacific), regional ports (Port of Stockton, Port of Oakland) and air cargo transportation (Stockton Metro Airport).



### LOGISTICS

- Located next to Stockton Metro Airport
- Nearby Class 1 intermodal facilities (BNSF, Union Pacific)
- STAA rated truck routes
- Access to Interstate 5 and Hwy 99
- 72 miles to the Port of Oakland
- Close proximity to Bay Area + Sacramento markets



### LABOR

- Access to a diverse + skilled workforce
- 1 Million people within 30-mile drive
- Population of 311,000 in the City of Stockton
- Wide array of available + affordable housing opportunities



### INFRASTRUCTURE

- Ample electrical service for heavy manufacturing
- Abundant sewer and water capacity for wet + high-employment uses
- Multiple data + telco service providers
- Off-site storm drainage for efficient site coverage



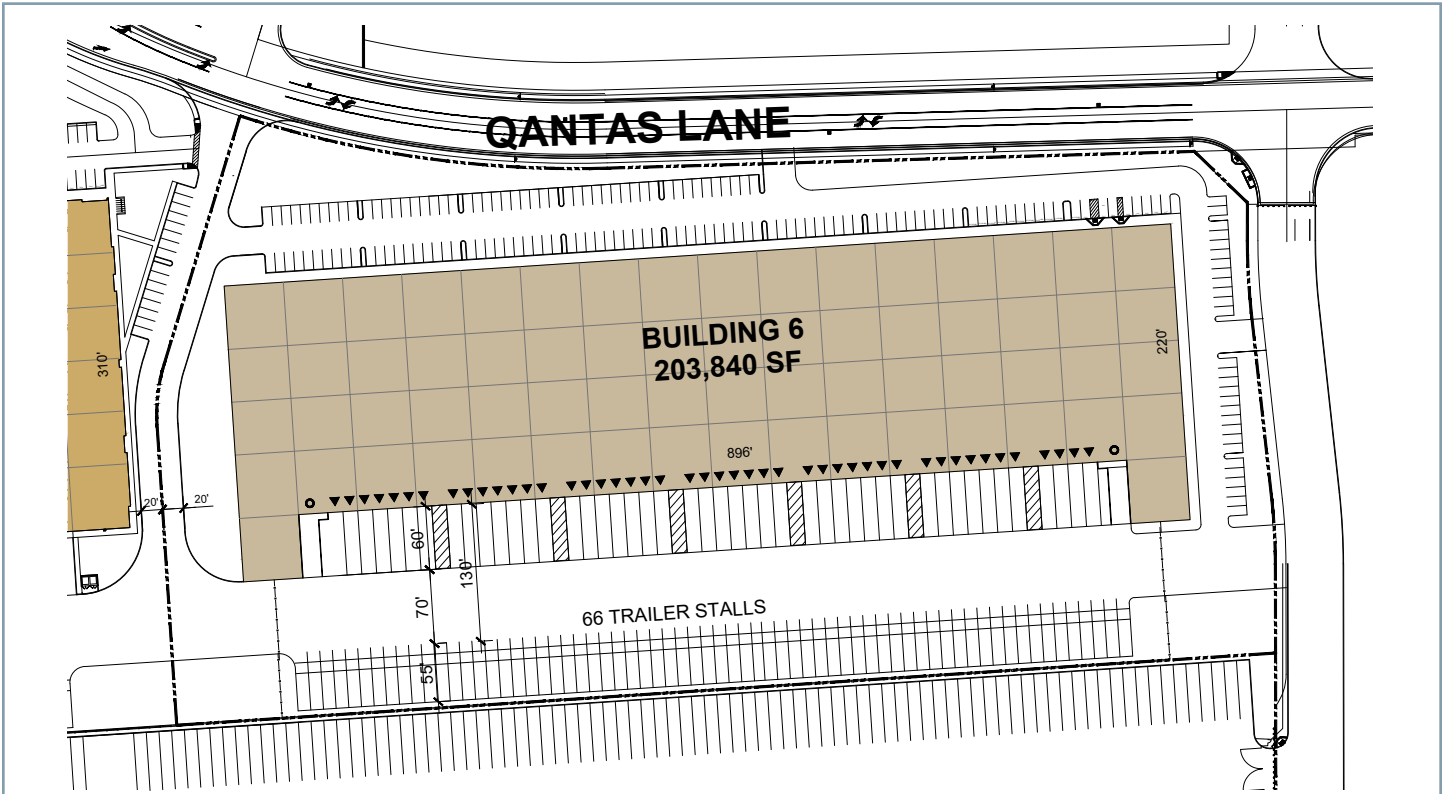
**BLAKE RASMUSSEN**  
Executive Managing Director  
+1 209 481 7044  
blake.rasmussen@cushwake.com  
Lic # 01010250

**KEVIN DAL PORTO**  
Executive Managing Director  
+1 209 601 2476  
kevin.dalporto@cushwake.com  
Lic # 01212935

**TYSON VALLENARI, SIOR**  
Executive Managing Director  
+1 510 919 2328  
tyson.vallenari@cushwake.com  
Lic # 01480887



cushmanwakefield.com



## SITE PLAN

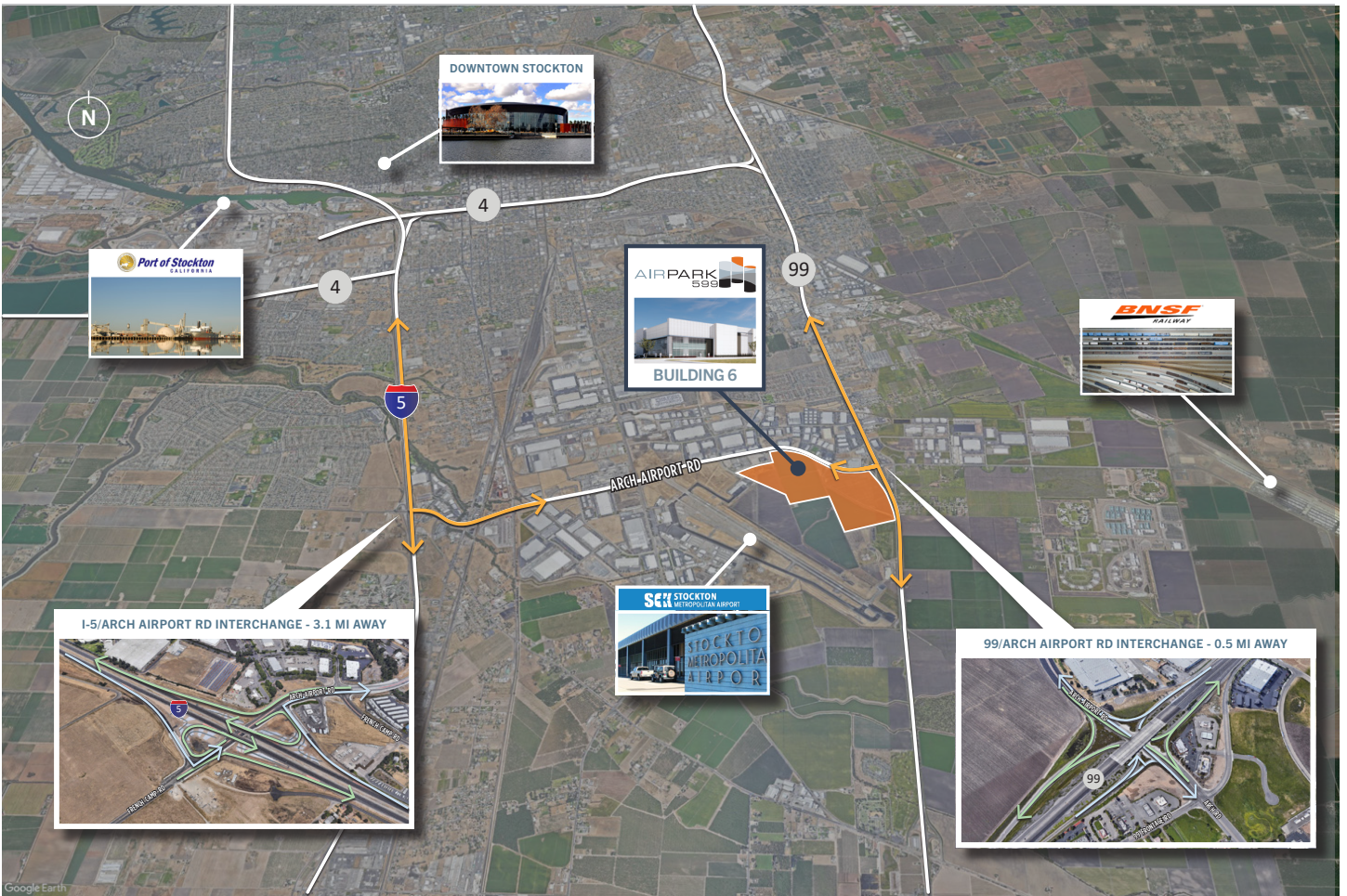
BUILDING SF	203,840 SF	TRUCK COURT	185'
BUILDING DIMENSIONS	896' X 220'	DOCK-HIGH DOORS	46
CLEARANCE HEIGHT	36'	GRADE LEVEL DOORS	2
COLUMN SPACING	56' X 60'	FLOORING	8" REINFORCED CONCRETE
SPRINKLERS	ESFR	AUTO PARKING	167
POWER	4,000 AMPS, 277/480V, 3 PHASE	TRAILER PARKING	66

**BLAKE RASMUSSEN**  
 Executive Managing Director  
 +1 209 481 7044  
 blake.rasmussen@cushwake.com  
 Lic # 01010250

**KEVIN DAL PORTO**  
 Executive Managing Director  
 +1 209 601 2476  
 kevin.dalporto@cushwake.com  
 Lic # 01212935

**TYSON VALLENARI, SIOR**  
 Executive Managing Director  
 +1 510 919 2328  
 tyson.vallenari@cushwake.com  
 Lic # 01480887





## BUILDING 6 ACCESS

HWY 99/ARCH AIRPORT INTERCHANGE	0.5 MI	BNSF INTERMODAL FACILITY	2.5 MI
I-5/ARCH AIRPORT INTERCHANGE	3.1 MI	I-205/I-580 CONNECTOR	22.6 MI
STOCKTON METRO AIRPORT	0.2 MI	PORT OF OAKLAND	71 MI
PORT OF STOCKTON	8.7 MI		
UNION PACIFIC INTERMODAL FACILITY	5.5 MI		

— FREEWAY ON-RAMP    
 — FREEWAY OFF-RAMP

*\*\*click on images to view Google Map location*

**BLAKE RASMUSSEN**  
 Executive Managing Director  
 +1 209 481 7044  
 blake.rasmussen@cushwake.com  
 Lic # 01010250

**KEVIN DAL PORTO**  
 Executive Managing Director  
 +1 209 601 2476  
 kevin.dalporto@cushwake.com  
 Lic # 01212935

**TYSON VALLENARI, SIOR**  
 Executive Managing Director  
 +1 510 919 2328  
 tyson.vallenari@cushwake.com  
 Lic # 01480887



cushmanwakefield.com



## SURROUNDING TENANTS

- |                        |                           |                            |                         |
|------------------------|---------------------------|----------------------------|-------------------------|
| 1. ALLEN DISTRIBUTION  | 7. YD WINDOWS             | 13. ONTRAC                 | 19. BEST EXPRESS FOODS  |
| 2. DOLLAR TREE         | 8. CONSTRUCTION METALS    | 14. UNITED FACILITIES      | 20. MAK FREIGHT         |
| 3. MEDLINE             | 9. COASTAL PACIFIC FOODS  | 15. NIAGRA BOTTLINE        | 21. PEARL CORP          |
| 4. PRISM TEAM SERVICES | 10. C&S WHOLESALE GROCERS | 16. PRISM LOGISTICS        | 22. PRIMESOURCE         |
| 5. ANIMAL LOGISTICS    | 11. ALLEN DISTRIBUTION    | 17. O'REILLY AUTO PARTS    | 23. UNIFIED GROCERS     |
| 6. BMW                 | 12. MILESTONE TRAILER     | 18. STAPLES                | 24. STARLINE INDUSTRIES |
| 25. KINGSDOWN          | 31. CROWN BOLT            | 37. SHEPARD BROS           | 43. PG&E                |
| 26. AMAZON             | 32. LUCY & ASSOCIATES     | 38. DORFMAN PACIFIC        | 44. LE TOTE             |
| 27. BED, BATH & BEYOND | 33. CLIMATE PROS          | 39. U.S. POSTAL SERVICE    | 45. UNION PACIFIC       |
| 28. XPO LOGISTICS      | 34. QUEST INDUSTRIES      | 40. LAWLY'S VITAMIN SUPPLY | 46. UPS                 |
| 29. WHIRLPOOL          | 35. TRADER JOE'S          | 41. PACTIV                 |                         |
| 30. WORLD CLASS DIST.  | 36. SJ DISTRIBUTORS       | 42. GILBERT                |                         |

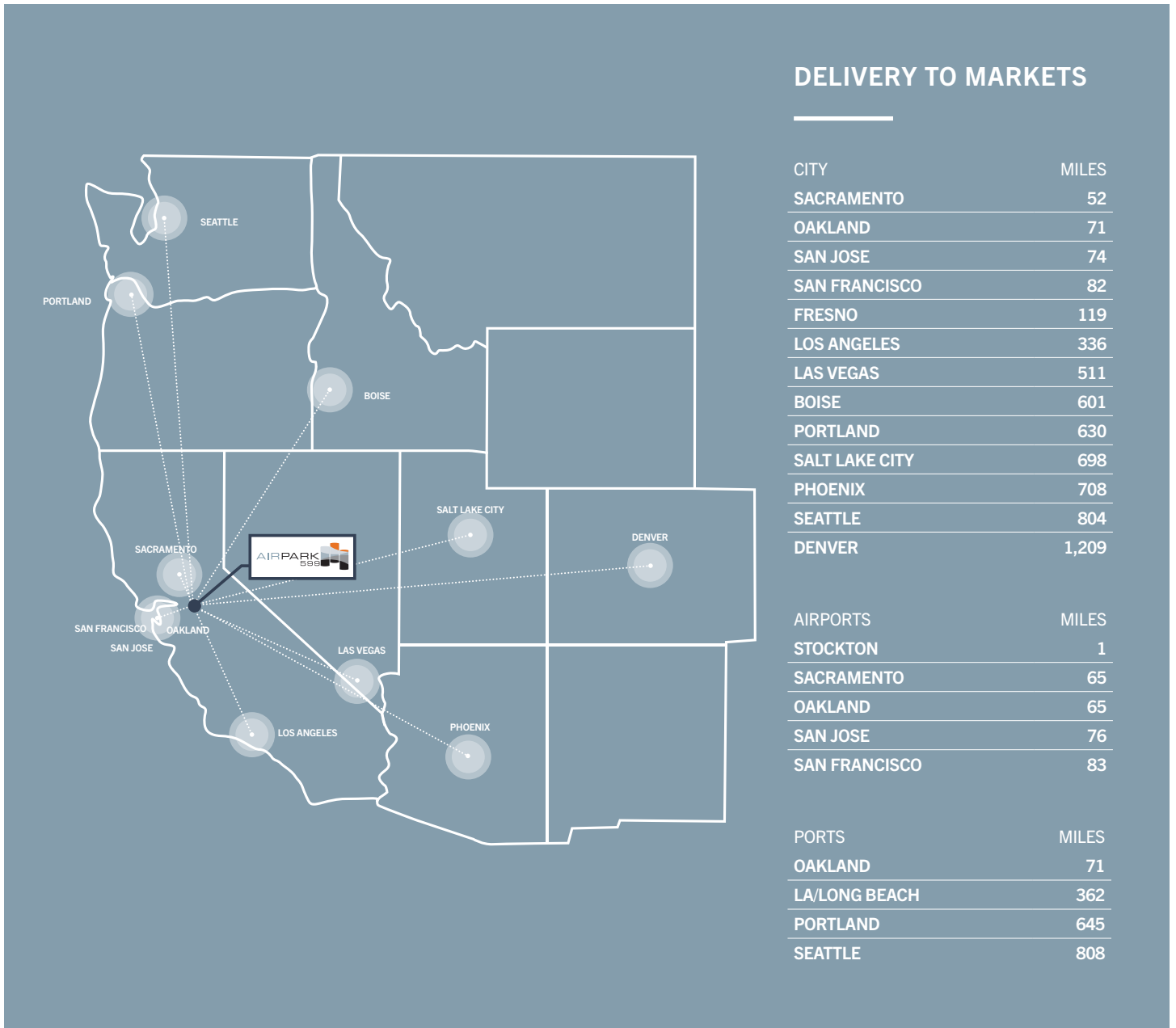
**BLAKE RASMUSSEN**  
Executive Managing Director  
+1 209 481 7044  
blake.rasmussen@cushwake.com  
Lic # 01010250

**KEVIN DAL PORTO**  
Executive Managing Director  
+1 209 601 2476  
kevin.dalporto@cushwake.com  
Lic # 01212935

**TYSON VALLENARI, SIOR**  
Executive Managing Director  
+1 510 919 2328  
tyson.vallenari@cushwake.com  
Lic # 01480887



cushmanwakefield.com

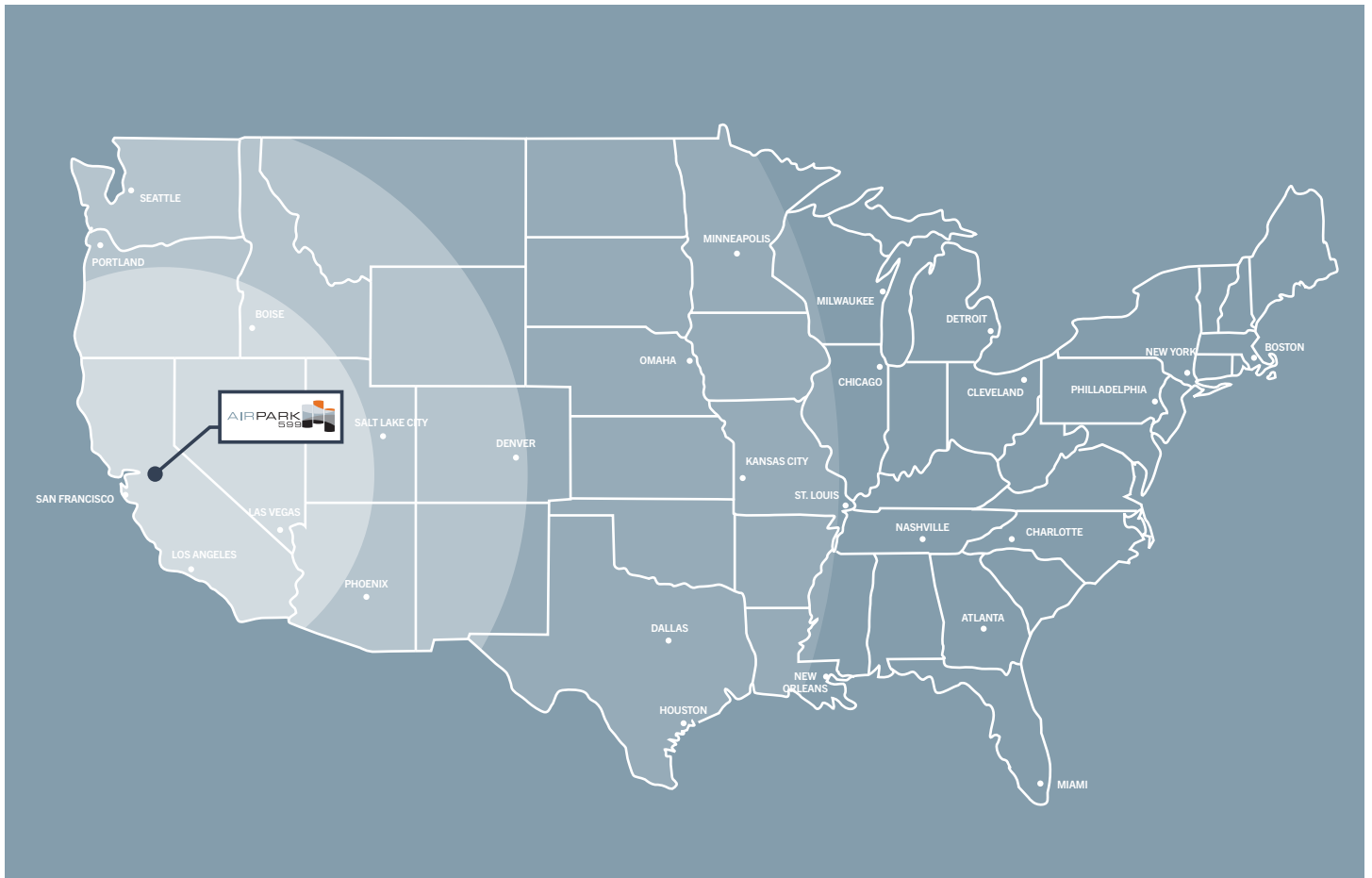


**BLAKE RASMUSSEN**  
 Executive Managing Director  
 +1 209 481 7044  
 blake.rasmussen@cushwake.com  
 Lic # 01010250

**KEVIN DAL PORTO**  
 Executive Managing Director  
 +1 209 601 2476  
 kevin.dalporto@cushwake.com  
 Lic # 01212935

**TYSON VALLENARI, SIOR**  
 Executive Managing Director  
 +1 510 919 2328  
 tyson.vallenari@cushwake.com  
 Lic # 01480887





**DELIVERY TO MARKETS (POPULATION)**

● SAME DAY DELIVERY	45,925,208
● NEXT DAY DELIVERY	77,037,078
● TWO DAY DELIVERY	138,070,457

**BLAKE RASMUSSEN**  
 Executive Managing Director  
 +1 209 481 7044  
 blake.rasmussen@cushwake.com  
 Lic # 01010250

**KEVIN DAL PORTO**  
 Executive Managing Director  
 +1 209 601 2476  
 kevin.dalporto@cushwake.com  
 Lic # 01212935

**TYSON VALLENARI, SIOR**  
 Executive Managing Director  
 +1 510 919 2328  
 tyson.vallenari@cushwake.com  
 Lic # 01480887



# AIRPARK STOCKTON, CALIFORNIA 599



## BUILDING 6 | 203,840 SF

For more information, please contact:



**BLAKE RASMUSSEN**  
Executive Managing Director  
+1 209 481 7044  
blake.rasmussen@cushwake.com  
Lic # 01010250

**KEVIN DAL PORTO**  
Executive Managing Director  
+1 209 601 2476  
kevin.dalporto@cushwake.com  
Lic # 01212935

**TYSON VALLENARI, SIOR**  
Executive Managing Director  
+1 510 919 2328  
tyson.vallenari@cushwake.com  
Lic # 01480887

A Quality Development By:



[AIRPARK599.COM](http://AIRPARK599.COM)